

DEsign and SusTainability assessment of Innovative biomass production systems and value-chains in the BioecoNomy (DESTINY):

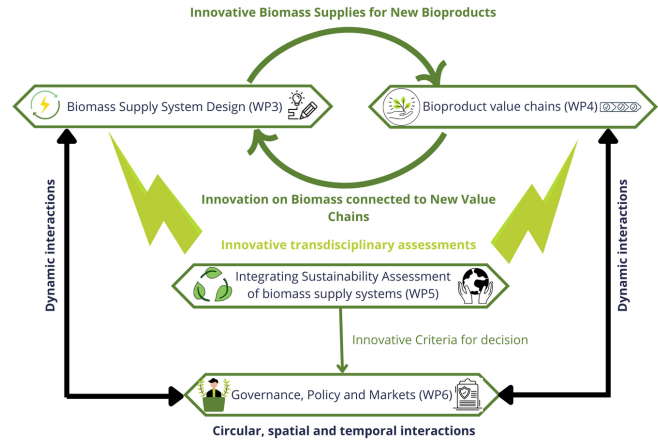
Project Overview

Developing the bioeconomy features high on the European policy agenda to tackle major societal challenges such as climate change, the phasing out of fossil resources, production self-sufficiency or the advent of the much needed ecological and energy transitions.

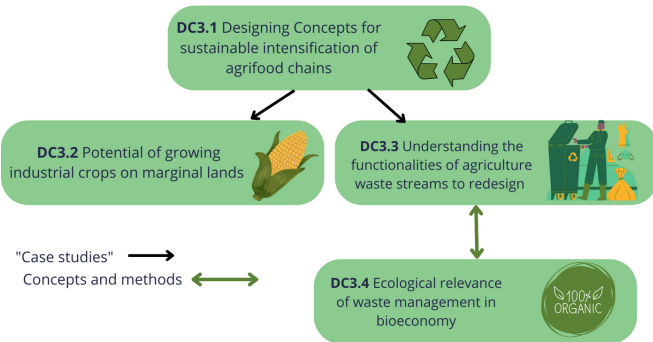
European Bioeconomy University (EBU), leading universities in bioeconomy research and training decided to join forces to educate a new generation of truly European experts (recruitment of 15 Doctoral Candidates (DC)), fostering rigorous, relevant and inter-disciplinary research and transferring its results into society and the economy. One of the gaps identified involved training at the doctoral level: DESTINY is designed to address this need while being at the forefront of bioeconomy research.

DESTINY is a Doctoral Networks (Marie Skłodowska-Curie Actions, Horizon Europe programme). The project will start in January 2024.

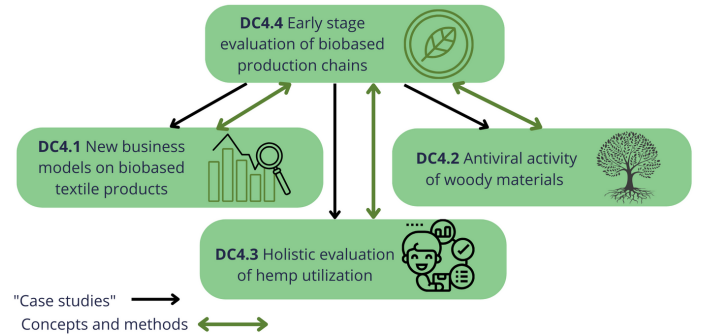
The research programme is structured into four interlinked thematic Work-Packages:



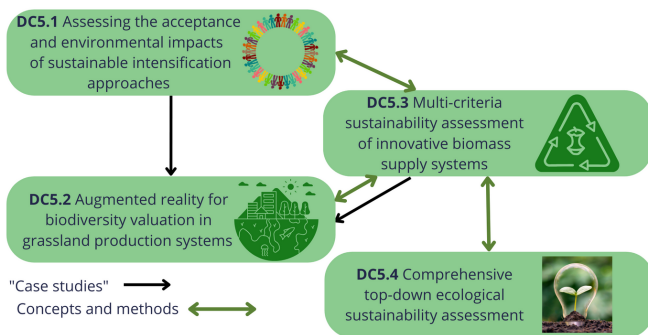
Biomass Supply System Design



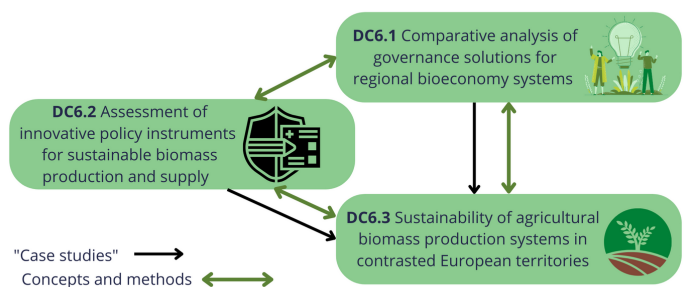
Bioproduct value chains



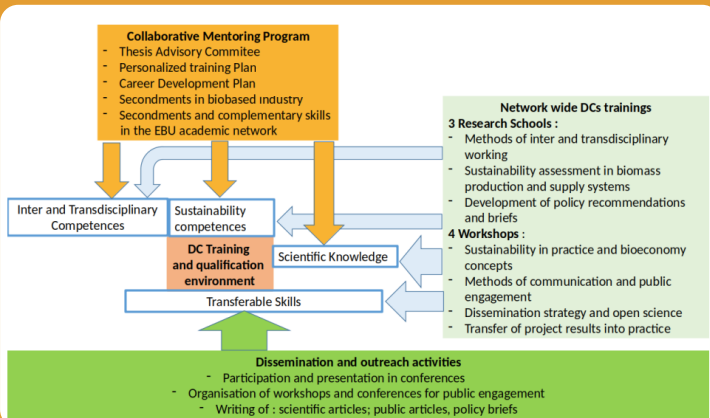
Integrating Sustainability Assessment of biomass supply systems



Governance, Policy and Markets



Each green box corresponds to one of the 15 PhD projects of the network.



A cross-cutting, innovative and tailor-made training programme:

DESTINY aims to provide a well-balanced training programme based on complementary of its consortium. It will promote knowledge transfer in a range of working environments, multidisciplinary and inter-sectoral exchanges, and workplace mobility. The joint supervision, mentoring and training by two universities, coupled with secondments at associated partners', represents a key-instrument in this strategy.

For more information and updates about DESTINY:

